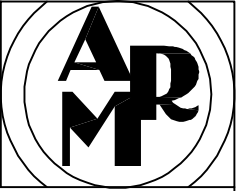


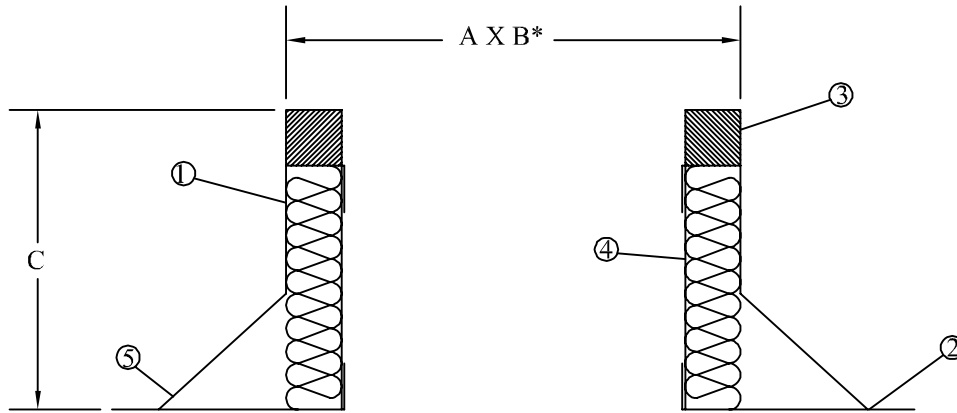
**AIR-RITE MANUFACTURING, LLC**

**ROOF CURBS**



## SUBMITTAL/FABRICATION DETAIL MODEL: C-1

## CANTED ROOF CURB



\*=OUTSIDE TO OUTSIDE DIMENSION

QTY.	A x B	Height	Pitch	COMMENTS

### Standard Construction

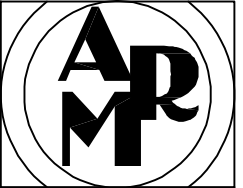
- ① -Curb body made of 18 ga. galvanized sheet metal with welded corners.
- ② -Base plate is 22 ga. galvanized sheet metal which is tack welded to the curb shell.
- ③ -1 1/2" X 1 1/2" wood nailer.
- ④ -1 1/2" fiberglass insulation
- ⑤ -3" X 3" cant strip

### Optional Construction

- Rectangular curb.
- .063 Aluminum construction.
- Burglar bars.
- Foam mounting gasket.
- Damper tray.
- Non-standard height (Specify height when ordering).
- Pressure treated nailers.
- Pitched curbs (Specify pitch when ordering).

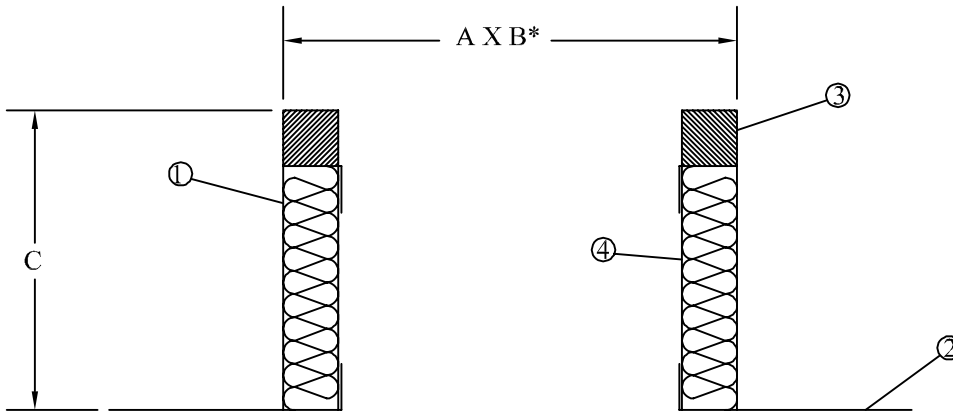
Union "Blue Label" Made.

PROJECT NAME:
W/O #:
TAG #:
CONTRACTOR:
SUBMITTED BY:



## SUBMITTAL/FABRICATION DETAIL MODEL: C-2

## SELF FLASHING ROOF CURB



\*=OUTSIDE TO OUTSIDE DIMENSION

QTY.	A x B	Height	Pitch	COMMENTS

Standard Construction

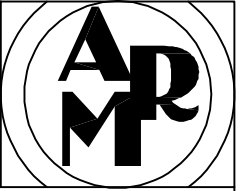
- ①-Curb body made of 18 ga. galvanized sheet metal with welded corners.
- ②-Base plate is 22 ga. galvanized sheet metal which is tack welded to the curb shell.
- ③-1 1/2" X 1 1/2" wood nailer.
- ④-1 1/2" fiberglass insulation

Optional Construction

- Rectangular curb.
- .081 Aluminum construction.
- Burglar bars.
- Foam mounting gasket.
- Damper tray.
- Non-standard height (Specify height when ordering).
- Pressure treated nailers.
- Pitched curbs (Specify pitch when ordering).

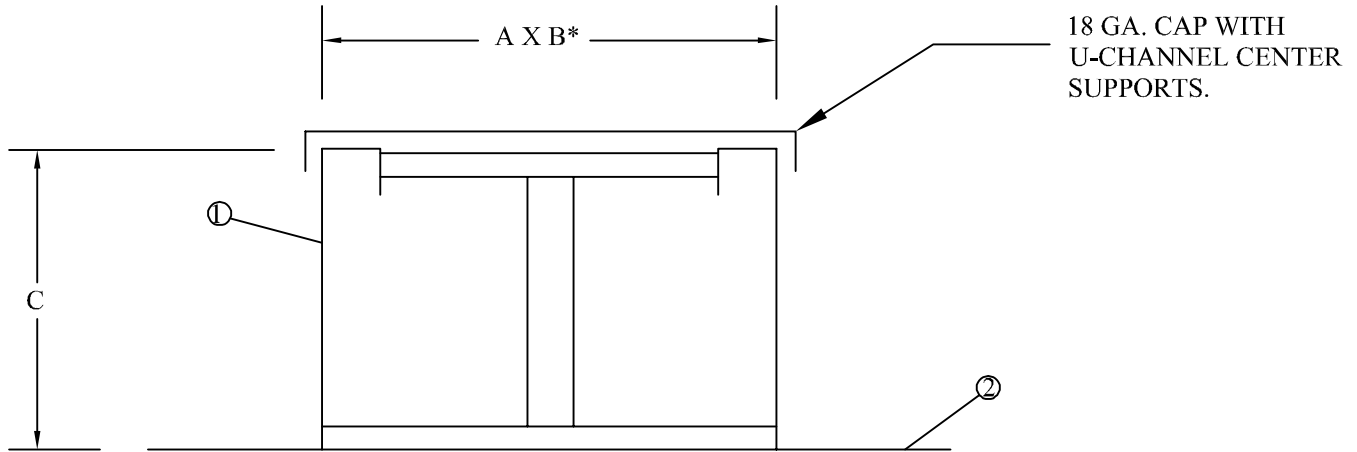
Union "Blue Label" Made.

PROJECT NAME:
W/O #:
TAG #:
CONTRACTOR:
SUBMITTED BY:



## SUBMITTAL/FABRICATION DETAIL MODEL: C-2P

## SELF FLASHING ROOF EQUIPMENT PLATFORM



\*=OUTSIDE TO OUTSIDE DIMENSION

Count	A x B	Height

### Standard Construction

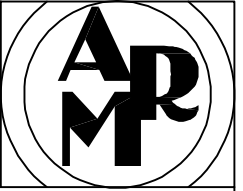
- ①-Curb body made of 14 ga. galvanized sheet metal with welded corners.
- ②-Base plate is 22 ga. galvanized sheet metal which is tack welded to the curb shell.
- ③-NO wood nailer.
- ④-NO fiberglass insulation

### Optional Construction

- Rectangular curb.
- .063 Aluminum construction.
- Burglar bars.
- Foam mounting gasket.
- Damper tray.
- Non-standard height (Specify height when ordering).
- Pressure treated nailers.
- Pitched curbs (Specify pitch when ordering).

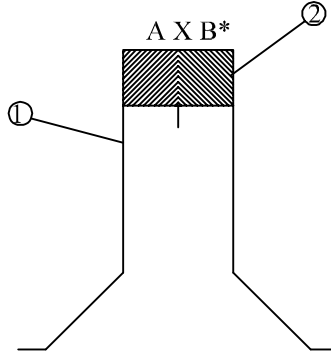
Union "Blue Label" Made.

PROJECT NAME:
W/O #:
TAG #:
CONTRACTOR:
SUBMITTED BY:



## SUBMITTAL/FABRICATION DETAIL MODEL: CANTED (C-2R) RAIL

## EQUIPMENT RAIL



Count	A x B	Height

### Standard Construction

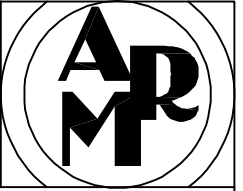
- ① -Curb body made of 18 ga. galvanized sheet metal with welded corners.
- ② -2"x 4" wood nailer.

### Optional Construction

- Rectangular curb.
- .063 Aluminum construction.
- Burglar bars.
- Foam mounting gasket.
- Damper tray.
- Non-standard height (Specify height when ordering).
- Pressure treated nailers.
- Pitched curbs (Specify pitch when ordering).

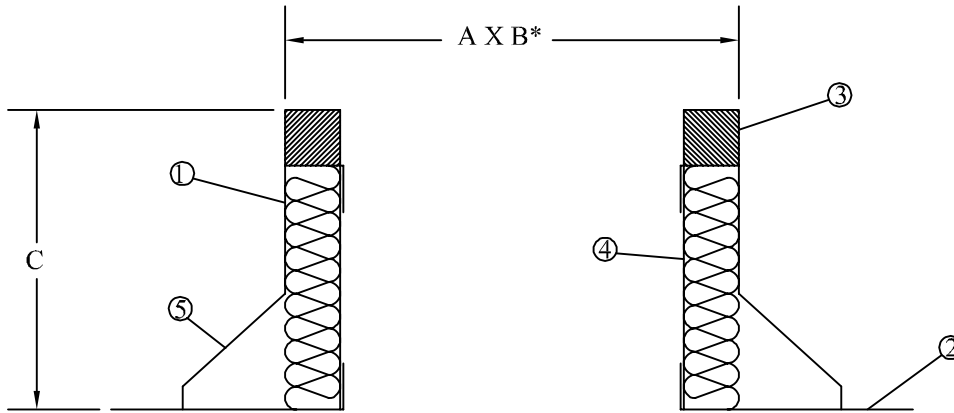
Union "Blue Label" Made.

PROJECT NAME:
ENGINEER:
TAG #:
CONTRACTOR:
SUBMITTED BY:



## SUBMITTAL/FABRICATION DETAIL MODEL: C-3

## CANTED STEP CURB



\*=OUTSIDE TO OUTSIDE DIMENSION

Count	A x B	Height

### Standard Construction

- ① -Curb body made of 18 ga. galvanized sheet metal with welded corners.
- ② -Base plate is 22 ga. galvanized sheet metal which is tack welded to the curb shell.
- ③ -1 1/2" X 1 1/2" wood nailer.
- ④ -1 1/2" fiberglass insulation.
- ⑤ -3" X 3" cant strip with 1 1/2" step.

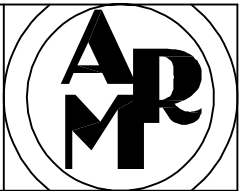
### Optional Construction

- Rectangular curb.
- .063 Aluminum construction.
- Burglar bars.
- Foam mounting gasket.
- Damper tray.
- Non-standard height (Specify height when ordering).
- Pressure treated nailers.
- Pitched curbs (Specify pitch when ordering).

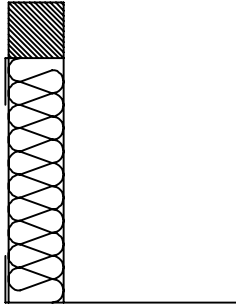
Union "Blue Label" Made.

PROJECT NAME:
ENGINEER:
TAG #:
CONTRACTOR:
SUBMITTED BY:

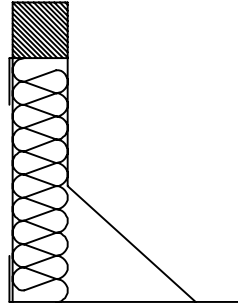
# AIR-RITE MANUFACTURING



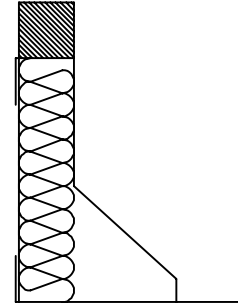
**C-2**



**C-1**



**C-3**

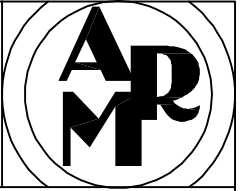


**CURB SIZE**  
**(SQUARE)**

	<u>C-2</u>	<u>C-1</u>	<u>C-3</u>
10	120.00	128.00	136.00
12	120.00	128.00	136.00
14	124.00	132.00	140.00
16	124.00	132.00	200.00
18	154.00	162.00	200.00
20	158.00	166.00	204.00
22	158.00	166.00	208.00
24	176.00	184.00	216.00
26	188.00	196.00	220.00
28	198.00	206.00	232.00
32	220.00	228.00	248.00
34	220.00	228.00	248.00
36	224.00	232.00	256.00
38	228.00	232.00	256.00
40	248.00	256.00	268.00
42	252.00	260.00	276.00
44	272.00	280.00	296.00
46	272.00	280.00	320.00
48	296.00	304.00	320.00
50	308.00	316.00	336.00
52	320.00	328.00	348.00
54	336.00	344.00	360.00
56	346.00	354.00	376.00
58	360.00	368.00	392.00
60	380.00	388.00	404.00

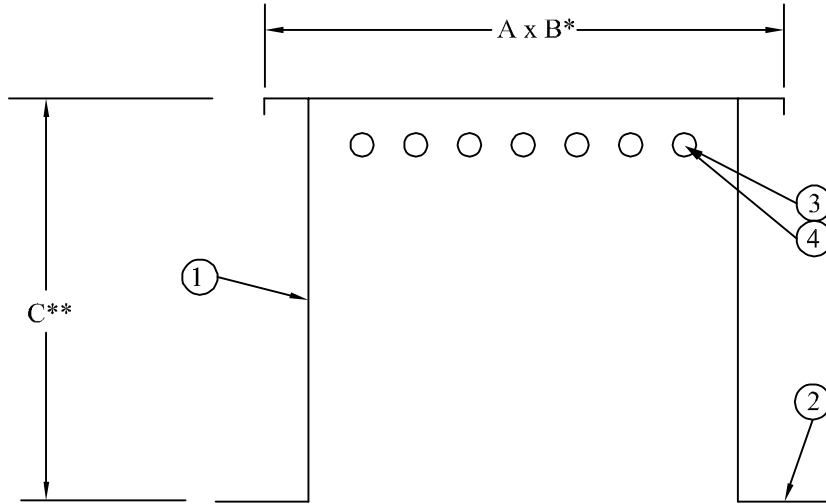
**CURB OPTIONAL CONSTRUCTION PRICING**

ADD FOR 16 GA. GALV. CONSTRUCTION:	37%
ADD FOR DAMPER TRAY:	12%
ADD FOR .063 ALUM. CONSTRUCTION:	40%
ADD FOR NON-STANDARD HEIGHTS:	
12" HIGH	20%
14" HIGH	30%
16" HIGH	40%
20" HIGH	55%
24" HIGH	60%
HIGHER THAN 24"	CONSULT FACTORY
ADD FOR METAL LINER:	CONSULT FACTORY
ADD FOR PITCHED CURBS:	
0" THRU 2" IN 12"	35%
3" THRU 4" IN 12"	50%
5" THRU 6" IN 12"	75%
OVER 6" IN 12"	CONSULT FACTORY
ADD FOR DOUBLE PITCHED CURBS:	CONSULT FACTORY
ADD FOR BURGLAR BARS:	\$24.00 SQ. FT.
ADD FOR CURBS WITH (1) SIDE OVER 120":	12%
ADD FOR FOAM MOUNTING GASKET:	8%
CURB EXTENSIONS MODEL (4V ONLY)	SAME AS 4V



SUBMITTAL/FABRICATION DETAIL:  
MODEL: C-4

VENTED CURB



\*=OUTSIDE TO OUTSIDE DIMENSION  
\*\*=STANDARD HEIGHT IS 16"

Count	A x B	Height

**Vents based on O.D. .06 curb.**

- Up to 24" sq. ....3
- Up to 34" sq. ....4
- Up to 45" sq. ....5
- Up to 46" sq. ....6

**Standard Construction**

- ① -Curb body made of 18 Gauge sheet metal with welded corners.
- ② -3/4 " dia. vent holes on 2" centers placed under flange.
- ③ -Insect screen spot welded over holes.

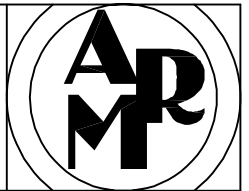
**Optional Construction**

- Rectangular curb.
- .063 aluminum construction.
- Burglar bars.
- Foam mounting gasket.
- Non-Standard height (specify height when ordering).
- Pitched curbs (specify pitch when ordering).
- Vented curb extension.

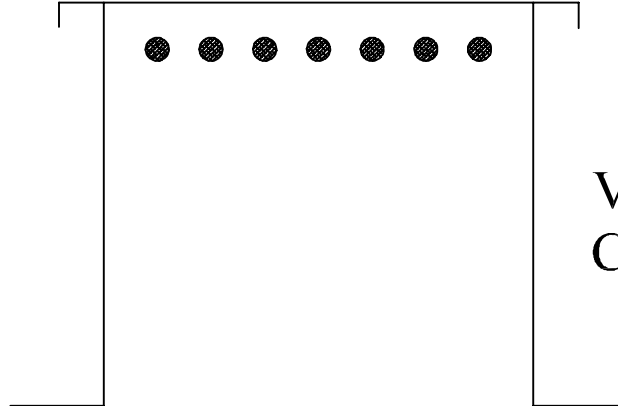
Union "Blue Label" Made.

PROJECT NAME:
W/O#:
TAG #:
CONTRACTOR:
SUBMITTED BY:





MODEL: 4V



VENTED ROOF  
CURB

CURB SIZE  
(SQUARE)

4V

10	144.00
12	144.00
14	152.00
16	168.00
18	168.00
20	172.00
22	188.00
24	212.00
26	228.00
28	248.00
30	268.00
32	280.00
34	300.00
36	316.00
38	336.00
40	352.00
42	368.00
44	388.00
46	404.00
48	424.00
50	444.00
52	464.00
54	480.00
56	496.00
58	516.00
60	536.00

CURB OPTIONAL CONSTRUCTION PRICING

ADD FOR 16 GA. GALV. CONSTRUCTION: 37%

ADD FOR .063 ALUM. CONSTRUCTION: 40%

ADD FOR METAL LINER: CONSULT FACTORY

ADD FOR PITCHED CURBS:

0" THRU 2" IN 12" 35%

3" THRU 4" IN 12" 50%

5" THRU 6" IN 12" 75%

OVER 6" IN 12" CONSULT FACTORY

ADD FOR DOUBLE PITCHED CURBS: CONSULT FACTORY

ADD FOR CURBS WITH (1) SIDE OVER 120": 12%

ADD FOR FOAM MOUNTING GASKET: 8%

CURB EXTENSIONS MODEL 4V ONLY) SAME AS 4V